

The Digital Menu System Process

Lunch Menu

- Grand Slam Flavored Burger..... \$2.95
- Grilled Shrimp & Rice..... \$3.75
- Roast Beef in Gravy w/Veggies \$4.25
- Sandwich Special \$3.95
Grilled Chicken BLT on a Multi-Grain Bread
- Soups of the Day \$1.50/\$1.85
Beef Barley or Broccoli Cheese
- Deluxe French Fries \$1.50

Open 7 days a week, including weekends & holidays
Breakfast: 6:30am - 10am • Lunch: 11am - 3pm • Dinner: 4pm - 7:30pm

SUBS

	SUB	COMBO
#1 Regular Sub	\$4.95	\$6.50
#2 Italian Sub	\$5.95	\$7.95
#3 Roast Beef	\$5.95	\$7.95
#4 Turkey Sub	\$5.95	\$7.95
#5 Club Sub	\$5.55	\$7.55
#6 Deluxe Club Sub	\$5.95	\$7.95
#7 Grilled Philly	\$5.25	\$7.25
#8 Tuna Salad Sub	\$4.95	\$6.50

Combos include Large Soft Drink and Medium Fry

SALADS

- #9 Chicken Salad \$6.15
- #10 Tuna Salad \$6.15
- #11 Chef Salad \$6.35
- #12 Grilled Philly Salad \$6.25
- #13 Grilled Chicken Philly \$6.35

Choose from our delicious dressings: Ranch, Lite Ranch, Italian, Blue Cheese, 1000 Island & Honey Mustard.

#1 Regular Sub
Provolone, Ham, Capicola
Sub \$4.95 Combo \$4.95

Choosing the right system

#1

First begin by determining the type of system that best suits your needs. The Lite, LAN & WAN systems all function similarly, but user control is different in each scenario.



SHOWQUEST™ LITE

Changes are made directly at the screen using a wireless keyboard & mouse.



SHOWQUEST™ LAN

A Local Area Network of screens is created & controlled by a manager pc. The manager pc creates schedules & playlists, then distributes them to the screen



SHOWQUEST™ WAN

Manager pc schedules the content that each screen displays, then transfers the content & schedules over the internet to each remote screen.

Creating your content

#2

Your creative personnel, agency, marketing / creative department or THC creates content assets like movies, images, graphics, flash animations and menus.

Image Files:
(JPEG, GIF, BMP)



Movie, Flash Animation
& PowerPoint Files:
(MPEG, AVI, ASF, WMV,
SWF, PPT)

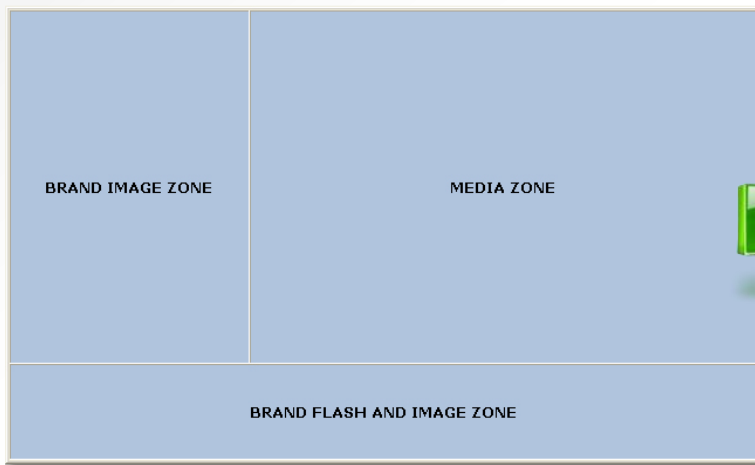


You can also use the SQ Menu Designer module to create menus without the need of any additional 3rd party software.

Creating a screen layout

#3

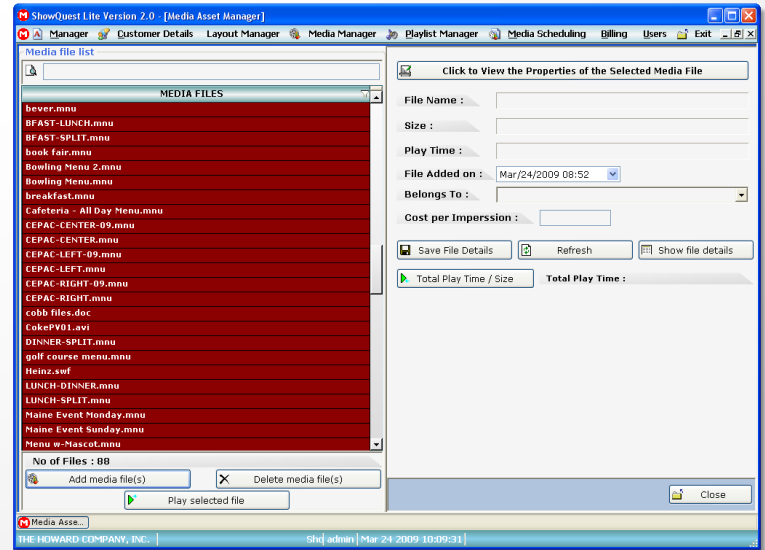
The ShowQuest™ Layout Designer allows you break-up your screen into multiple zones. This allows you to display up to 6 different types of information at one time, including video, flash animations, images, menus, a clock and tickers that can display scrolling text that you directly input or “real-time” information like news and sports scores.



Gathering content

#4

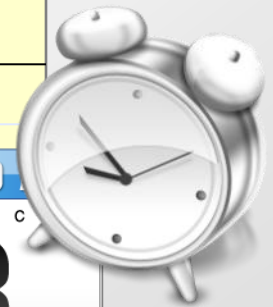
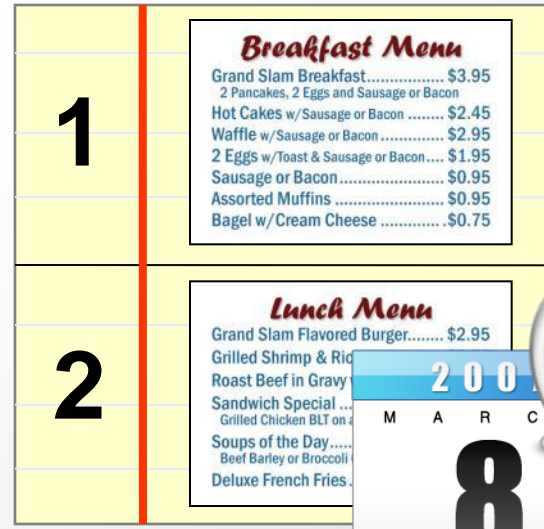
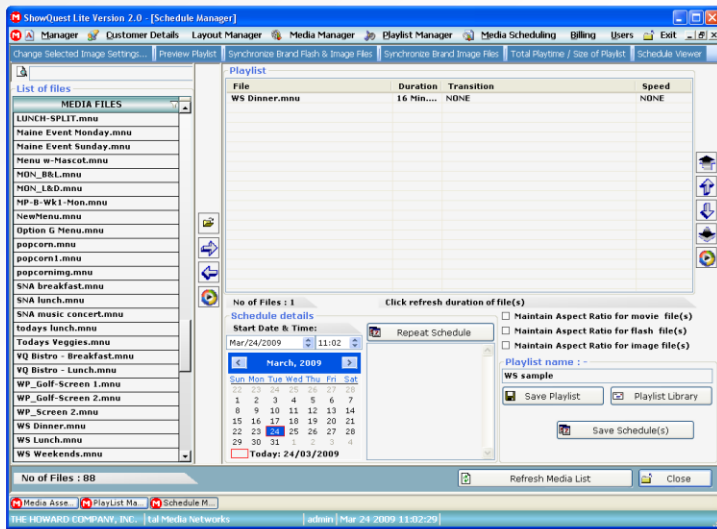
These assets are then loaded into the ShowQuest™ Manager application. The software might be on a computer at a corporate office, in a back office on site, or on a mini-pc installed on the back of the LCD screen.



Scheduling content

#5

Once the content (assets) are loaded into the ShowQuest™ Manager software, they can be scheduled into **playlists** – instructions that tell each media player to show the content at a particular date and time.



Sending & Playing Content (LITE)

#6

ShowQuest™ LITE In the Lite solution, once playlists and schedules are created, the Lite Player module is then loaded and your shows will display and change automatically according to your schedules.

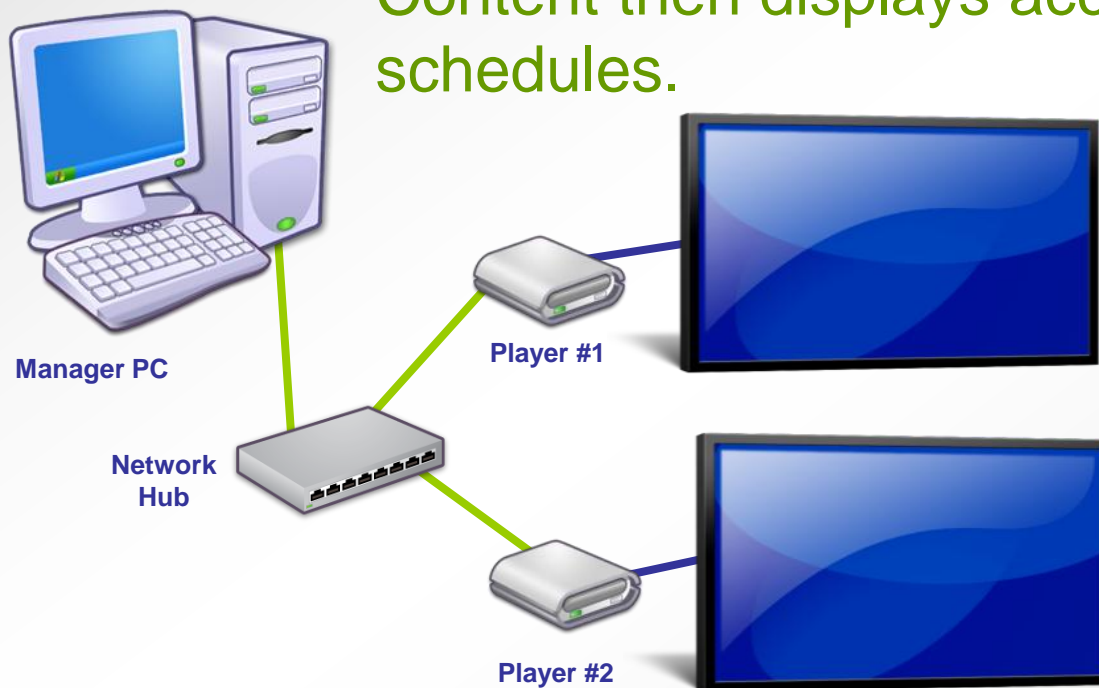
Media Player is mounted to the back of the screen and has ShowQuest™ Lite solution installed. Content is controlled directly from the screen, no network support is needed.



Sending & Playing Content (LAN)

#6

ShowQuest™ LAN In the LAN solution, the Manager PC sends the content, playlists and schedules over a network to each media player. Content then displays according the designated schedules.

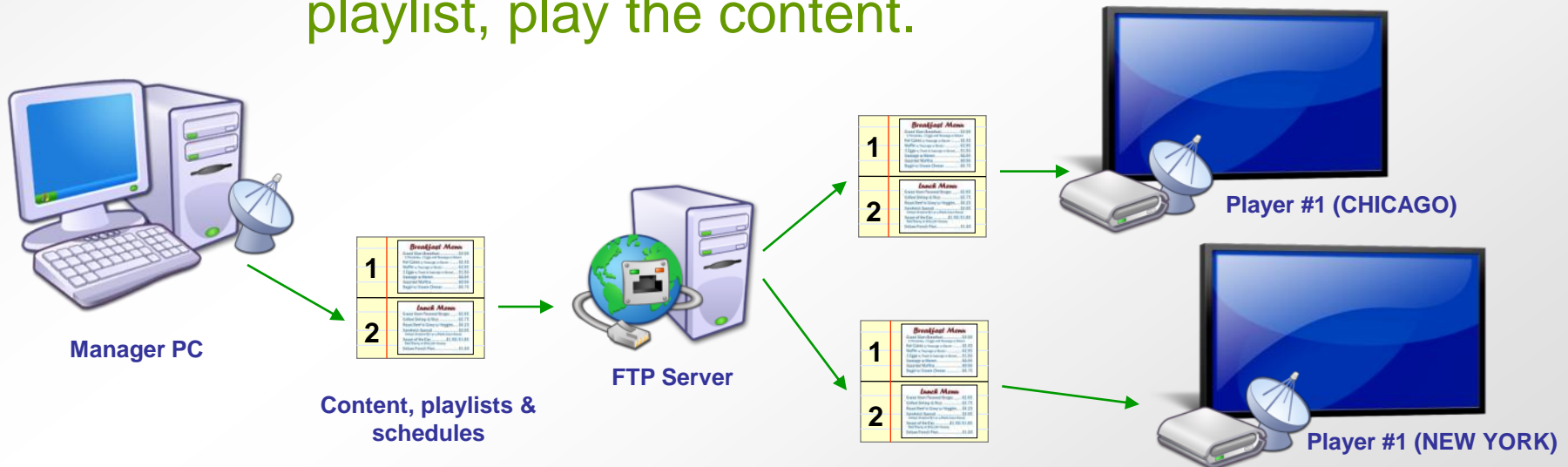


Media Player is mounted to the back of the screen and has ShowQuest™ LAN Player software installed. Player sends and receives info to/from the Manager PC.

Sending & Playing Content (WAN)

#6

ShowQuest™ WAN In the LAN solution, the Manager PC sends the content, playlists and schedules to a FTP (File Transfer Protocol) Server. Media Players are programmed to check the FTP Server for updates and will download these files, and when directed by the playlist, play the content.



Getting Feedback from the Players

#7

As each media player plays the content in its playlist, it generates a **compliance log** that is then sent back to the ShowQuest Manager system to confirm that everything is working properly.

